



THE AICUP SPOTLIGHT

Monthly Newsletter

Administration | Compliance | Facilities | Finance | HR | Legal
Student Services | Technology | Telecommunications | Treasury

Business Efficiency Programs Update

May 2026 - Volume 16, Issue 5

AICUP Trending

- **AICUP--NEW PROGRAM!** [Generative AI Platform Exclusively for AICUP Members!](#)
- AICUP--[Campus Leaders Webinar Series](#) *Upcoming Dates & Past Recordings*
- AICUP--[Need Office Space in Harrisburg?](#)
- AICUP Comms Desk--[How Much Do Students Expect to Make Upon Graduation](#)
- AICUP--[2025 Economic Impact](#)

Finance & Treasury

- Constellation--[Turn Energy into Income with CHP & PA Tier II AECs](#)
- Evolution Sustainability Group--[Other Side of Energy-Lets Talk Gas](#)
- Multiple Employer Retirement Plan--[How PAICU MEP is Lowering Plan Costs](#)
- Forvis Mazars (CPE)--[Higher Ed Series: Lessons in Resilient Leadership](#) 6/10
- Sallie Mae--[How to Recognize Student Loan Fraud](#) 6/4
- SitelogIQ--[Reactive to Proactive: Strategic Planning](#)

Facilities & Administration

- Constellation--[Turn Energy into Income with CHP & PA Tier II AECs](#)

- **Evolution Sustainability Group**--[Other Side of Energy-Lets Talk Gas](#)
- **SiteLogIQ**--[Reactive to Proactive: Strategic Planning](#)

Technology & Telecommunications

- **AICUP--NEW PROGRAM!** [Generative AI Platform Exclusively for AICUP Members!](#)
- **JourneyEd**--[EdTech Procurement Done Right](#)
- **ePlus**--[Budget-Friendly Suite of Top Data Security Software](#)
- **Rize Education**--[What Does a Rize-Powered Course Look Like?](#)
- **Workday Webinar**--[Workday AI & the Future of Higher Ed](#) 6/17

HR, Compliance & Legal

- **Clery Center Webinar:** [Clery Act & Title IX](#) 6/12
- **D.Stafford & Associates**--[Title IX & Equity Alliance](#)
- **Voluntary Benefits Shop**--[AICUP Long Term Care Program](#)
- **Multiple Employer Retirement Plan**--[How PAICU MEP is Lowering Plan Costs](#)
- **NEW AICUP AMP Program**--[Modernize Your Health Benefits w/ICHRA](#)
- **Barley Snyder**--[Fed Reclassification of Marijuana: What PA Colleges Should Do Now](#)
- **Forvis Mazars (CPE)**--[Higher Ed Series: Lessons in Resilient Leadership](#) 6/10

Student Services/Enrollment Management/Academic

- **Swarthmore College**--[Research Computing at Smaller Institutions](#) 6/16-17
- **Clery Center Webinar:** [Clery Act & Title IX](#) 6/12
- **D.Stafford & Associates**--[Title IX & Equity Alliance](#)
- **United Healthcare StudentResources**--[Talk to a Doc or Therapist Virtually](#)
- **Rize Education**--[What Does a Rize-powered Course Look Like?](#)
- **Sallie Mae**--[How to Recognize Student Loan Fraud](#) 6/4

AICUP Resources

- [AICUP--Collaboration Mission & Business Efficiency Programs](#)
- [AICUP--Corporate Affiliate Listing by Category](#)
- [AICUP--Fair Use Policy of AICUP Name & Trademarks](#)
- [AICUP--Privacy Policy](#)
- [AICUP--Leadership & Staff](#)
- [AICUP--The Spotlight Archives](#)



Latest from AICUP

NEW Program! CR8 Amplify - AICUP's Generative AI Platform

AICUP is pleased to announce a new partnership with CR8 to provide members with access to **Amplify**, a hosted generative AI platform designed to help organizations use AI securely and effectively. **Amplify** connects your data to the right models for each use case and supports 20+ leading large language models, including OpenAI GPT-5 and Anthropic Claude 4.5. [See Below for more info!](#)

Rental of Office Space at AICUP Headquarters

AICUP is seeking a tenant or tenants(s) for offices at 101 North Front Street, Harrisburg, PA (the James McCormick Mansion/home to AICUP). One space offers one executive office on first floor with view of the river and private bathroom and access to the conference room.

AICUP would be very interested in securing a tenant that is a member college, but any interest from a current Corporate Affiliate or Endorsed Program Provider would also be welcomed. For more information about this space and/or to schedule a visit, please contact [Nichole Duffy](#).

Add AICUP to Email Safe Sender List

AICUP asks that you make sure AICUP is on your college or university's email safe sender list. This will ensure that important AICUP communications arrive in your email inbox.

[Top](#)



From the AICUP Comms Desk

College students asked, "How much do you expect to make after graduation?"

[Watch](#) AICUP President Tom Foley's response. Quoting [The Brookings Institution](#):

"After the first few years, college graduates earn more than high school graduates."

AICUP remains committed to elevating the voices of Pennsylvania's independent colleges and universities and highlighting the vital value of higher education.

[Top](#)



Campus Leaders Webinar Series

AICUP's Campus Leaders Webinar Series is designed to increase engagement with our member schools while delivering timely, practical solutions. Featuring insights from your colleagues on other member campuses, endorsed and AMP program providers and corporate affiliates, each session will highlight resources and strategies tailored specifically for AICUP institutions. Join us to stay informed, connected, and equipped to meet today's campus challenges.

Upcoming:

June 4th [How to Recognize Student Loan Fraud](#)

Recordings & Slide Decks from Recent Webinars (click for Slide Deck/Recording):

- Beyond the Books: Libraries as the Center of Campus (Kimmel Arch) ([SD/Recording](#))

- Hatching a Podcast for Enrollment & Engagement (Manor College) ([SD/Recording](#))
- How America Succeeds after College (Sallie Mae & Schools) ([SD/Recording](#))
- Reactive to Proactive: Strategic Planning for Campus Facilities (SiteLogIQ) ([SD/Recording](#))
- Recurring Revenue w/CHP & PA Pier II AECs (Constellation) ([SD/Recording](#))
- The Other Side of Energy: Lets Talk Natural Gas (Evolution) ([SD/Recording](#))

[Top](#)



Title IX & the Clery Act Webinar ~Clery Center

[Register](#)

Tuesday, June 16th

1:00 - 4:30 PM

\$278 per registrant

\$211 for member registrants**

Explore how to design policies and procedures that empower survivors of dating violence, domestic violence, sexual assault, or stalking (DVSAS) while fully meeting both Clery Act and Title IX requirements.

This training explores how to design policies and procedures that empower survivors of dating violence, domestic violence, sexual assault, or stalking (DVSAS) while fully meeting both Clery Act and Title IX requirements. Instructors will:

- Explain how annual security report policy statements connect to the underlying institutional policies that support response and disciplinary procedures
- Show how to align policies for clarity, accessibility, and compliance
- Provide strategies for building survivor-centered, streamlined policies

Attend this training if you are:

- Directly or adjacently involved in the creation or implementation of policy addressing DVSAS.

**** Member rate:** *AICUP Members receive a 15% discount off Clery Center Institutional Membership. The 15% discount off the standard Institutional Membership cost will be applied for as long as Clery Center Institutional*

Membership is continuously maintained. If Clery Center Institutional Membership lapses, the discount will also lapse.

Clery Center [Institutional Members](#) receive five (5) free registrations and [Individual Members](#) receive a 25% discount that can be applied to any Clery Center [Clery Act Training Seminar](#), [training](#), or [workshop](#). Institutional Members then receive 25% off additional training registrations after their initial five have been used.

Contact: Cheryl Levy, clevy@clerycenter.org or 484-584-4217



Recurring Revenue w/ CHP & PA Tier II AECs ~Constellation

Recently, Constellation provided information on how to turn energy into income with a webinar on **Recurring Revenue w/CHP & PA II AECs**. Bryan Munley facilitated the webinar, along with Blair Miller, AICUP's liaison for the Energy Procurement Program. Bryan is the Senior Solutions Business Development Manager at Constellation.

The origins of PA Alternative Energy Portfolio Standards Act (AEPS) was established in 2004. The AEPS was enacted to provide economic development opportunities by increasing the mix of alternative electricity generation. The AEPS Act also required electric distribution companies (EDCs) and electric generation.

For more information, check out the [recording](#) and [slide deck](#).

If your campus decides to do this, Constellation would manage the creation and monetization of Tier II AECs on your behalf to maximize the value of your retroactive and future projects.

[Latest Weekly Energy Industry Summary](#)



is the endorsed energy supplier to assist AICUP members with managing energy costs in new and powerful ways to achieve budget certainty, cost savings and financial protection with a full range of integrated energy solutions.

Constellation is an endorsed co-provider of the AICUP Energy Management & Procurement program.

Contact: **Blaire Miller**, blaire.miller@constellation.com or 855-836-2658

[Top](#)



AICUP Natural Gas Procurement Program *~Evolution Sustainability Group*

Energy management extends beyond electricity alone. Recent volatility in natural gas markets has made procurement more complex, with rising uncertainty and pressure on institutional budgets.

In response, AICUP is launching the **Natural Gas Procurement Program** to provide members with access to market intelligence, competitive supplier pricing, and greater transparency. Unlike many third-party arrangements, this program features a fully transparent broker fee—often up to 50% lower than what institutions may currently be paying.

Recently, Evolution presented a webinar to AICUP members about how this program can help your institution make more informed energy decisions, reduce costs, and bring a little extra “gas” to your bottom line.

For more information, check out the [recording](#) and [slide deck](#).

[Latest Energy Market Updates](#)



is a complete package of energy and sustainability expertise bundled across our sister companies. Evolution’s customers enjoy a positive impact on the bottom line by leveraging a comprehensive suite of energy and sustainability services that mitigate risk, enhance stakeholder/asset value, and provide a foundation to increase corporate citizenship and sustainable practices. **ESG is also an endorsed co-provider of the AICUP Energy Management & Procurement program.**

Contact: **Chuck Hurchalla**, churchalla@evolutionsq.com or 877-280-4655

[Top](#)



NACCOP Title IX & Equity Alliance

~D. Stafford & Associates

Did you know that NACCOP has a Title IX & Equity Alliance which is a dedicated affinity group through which Title IX and Equity Professionals and the practitioners can benefit from NACCOP's expertise in complying with the Clery Act, Title IX, and other civil rights laws that affect their work.

With the advent of the Alliance, Title IX and Equity professionals can further engage in a dedicated community of practitioners through which they will receive additional discounts, exclusive programming, and other benefits curated specifically for them to meet their unique professional development needs.

[More Information](#)

[D. Stafford & Associates](#) (DSA) is the endorsed program provider for AICUP's **Title IX Coordinator/Investigator Training**. DSA offers a series of intensive training classes for Title IX coordinators and for investigators who are responsible for conducting and overseeing Title IX compliance and sexual misconduct investigations on campus.

[Upcoming Training](#)

Contact: Dolores Stafford, dolores@dstaffordandassociates.com or 302-344-5809

[Top](#)



AICUP Long Term Care Program

~The Voluntary Benefits Shop

The Long-Term Care (LTC) Insurance Program has been an AICUP Board-endorsed program since 2006. Mike VanGavree, the founder of the original program remains actively involved, and has aligned with The Voluntary Benefits Shop (The VB Shop) to provide this best-in-class program to the member institutions.

What to know:

1. AICUP's new Life with Long-Term Care program, available to all member schools at no cost
2. The Voluntary Benefit Shop's preferred underwriting offer, which gives AICUP members' full and part-time staff access to guaranteed issue policies (no health question to qualify)
3. Our fully managed employee education and engagement campaigns, to help your staff make informed choices
4. Our dedicated account management and client advocate teams that oversee implementation, education enrollment and support for these programs



The ***Long-Term Care (LTC) Insurance Program*** has been an ***AICUP Board-endorsed program*** since 2006. Mike VanGavree, the founder of the original program remains actively involved, and has aligned with The Voluntary Benefits Shop (The VB Shop) to provide this best-in-class program to the member institutions. If you have questions and would like to have a one-on-one meeting to further discuss the plan before seeing a quote:

Contact Bill Spiro, bspiro@thevbshop.com or 443-760-4258

[Top](#)



NEW PROGRAM: CR8 Amplify

AICUP is pleased to announce a new partnership with CR8 to provide members with access to **Amplify**, a hosted generative AI platform designed to help organizations use AI securely and effectively. Amplify connects your data to the right models for each use case and supports 20+ leading large language models, including OpenAI GPT-5 and Anthropic Claude 4.5.

Amplify gives your institution secure, enterprise-grade access to the world's leading AI models—including GPT-4, Claude, and 20+ others—all through one powerful platform designed from Vanderbilt University.

🔗 Benefits of Amplify

- Access 20+ AI Models: GPT-4, Claude, Gemini, and specialized tools in one place

- Enterprise Security: Your data stays private and is never used to train AI models
- Centralized Management: Control user access, monitor usage, and maintain compliance
- Cost Effective: One platform replaces multiple individual subscriptions
- Education Focus: Built for research, teaching, administration, and student services
- Ongoing Training: Regular webinars and support to maximize your investment

What It Costs:

- \$10 per user/month (5 users minimum)
- Choose either a 6-month or 12-month term
- Scale up or down as your needs change


How to Register

Ready to get started? Kelly Carli will handle your onboarding and offboarding: ✉ carli@aicup.org

Support & Training Available

You're not alone on this journey! Kasie Joseph from CR8 is your dedicated contact: ✉ kasie@cr8.io. Kasie can help with:

- Technical questions about the platform
- Training resources and best practices

 **Save the Date:** Learn from [Dr. Jules White](#) on July 22nd. Register [Here!](#)
Join us for exclusive monthly collaboration sessions.

Next Steps

1. Contact Kelly Carli at carli@aicup.org to begin your registration
2. Explore our [YouTube Training](#)
3. Reach out to Kasie Joseph at with any questions at kasie@cr8.io



Amplify is the **AICUP Member Preferred Program (AMP) Provider of CR8 Amplify for AICUP Platform**. Amplify is hosted Gen AI platform that connects data to the right models for each use case and supports 20+ top-tier LLMs including the latest versions of Chat GPT and Claude. You now have

access to intuitive interfaces that put advanced AI capabilities in your hands—no technical expertise required. CR8 is available for onboarding + training which is included with your AICUP instance so adoption doesn't stall. Hosted environment, data governance and compliance built-in, with continuous updates and monitoring. Amplify does not train the models.

Contact: Kasie Joseph, Kasie@cr8.io or 512-585-2512

[Top](#)



AICUP Data Security Software Program

~ePlus Technology

The AICUP Data Security Software Program, powered by ePlus, gives member institutions a smarter, more cost-effective way to strengthen their cybersecurity posture. Through this program, colleges and universities gain access to industry-leading solutions from Rubrik, SentinelOne, and Zscaler—all at significantly reduced pricing.

By tapping into Pennsylvania's Intermediate Unit purchasing network, members can unlock savings of up to 50% or more while implementing powerful, enterprise-grade protection. Backed by more than 25 years of experience in the education sector, ePlus understands the realities of campus IT environments and delivers solutions that are both effective and practical.

What Your Campus Gains

Stronger Protection. Less Complexity. Lower Cost.

- **Advanced Backup & Recovery (Rubrik):** Always-on, fully managed protection with immutable backups, ransomware monitoring, and rapid recovery
- **Next-Gen Endpoint Security (SentinelOne):** AI-driven threat detection, real-time response, and 24/7 managed defense
- **Secure Cloud Access (Zscaler):** Scalable, cloud-first security with full inspection, threat prevention, and seamless user access

From proactive threat defense to rapid recovery, this program equips your campus with the tools and expertise needed to stay secure—without straining your budget or your team.



heads the ***AICUP Member Preferred Program (AMP) Provider of the Data Security Software Program.*** From Cloud and Data Center, Security, Collaboration, Networking and AI, to Digital Transformation, Managed and Professional Services or Financing, we bring a vast perspective that helps organizations design, orchestrate and seamlessly implement versatile technology solutions. Our unparalleled expertise has been refined over more than three decades, allowing customers to maximize the return on their technology investments.

With a dedicated SLED practice of Account Executives and SLED Operations Professionals, ePlus knows SLED, Contracts and works to keep our customers in compliance with grants and funding.

Contact: Brandon Holmes, bholmes@eplus.com or 484-358-6410

[Top](#)



PAICU MEP Momentum Is Growing — Be Part of It!

The momentum behind the PAICU Multiple Employer Retirement Program (MEP) continues to grow across Pennsylvania — and that growing leverage is driving plan expenses down.

Participating employees are the immediate and direct beneficiaries, and campuses that join gain access to a stronger, more cost-effective retirement solution.

To learn more — whether you are exploring participation or are a current member seeking updates and deeper engagement — ***join Cale Nelson at his weekly PAICU MEP Zoom meeting every Tuesday at 2:30 PM.*** These sessions provide a convenient opportunity to explore the program, ask questions, share insights, and stay informed about ongoing developments.

If your school has already enrolled, join the zoom to ask questions, seek clarification and maximize the PAICU MEP advantage!

We encourage you to take another close look at this program — run by AICUP members, for AICUP members.

AICUP Member Zoom-Ins

Tuesdays, 2:30 to 3:30 PM

[Join Here](#)

[Top](#)



AICUP Health Choice: A Smarter Alternative to Group Health Insurance



Modernize your health benefits with ICHRA

A smarter alternative to group health insurance

The ICHRA is a group health benefit that offers more flexibility, choice, and control than traditional group funding strategies.

With an ICHRA, employers can offer a defined, tax-free allowance. Employees use that allowance to purchase the coverage that best fits their needs.

Scan to watch:
How ICHRA Works



How ICHRA reduces costs for universities

1

Predictable budgeting
Control costs by setting your own contributions

2

No penalties for claims
Groups are not penalized for high utilization

3

Avoid premium hikes
Stop unpredictable rate increases year after year

Model the move to ICHRA confidently

“Our university has saved in excess of \$500,000 each of the past two years while still providing comparable and exceptional benefits to our faculty and staff. This has been transformational for our university.”

Get a clear picture of how ICHRA could work for you. A financial analysis models your current benefit spend against an ICHRA approach, so you can make an informed, data-backed decision.

What you'll need to get started:

- Your employee census
- Current summary of benefits and rate grids
- Current employer and employee contribution structure

✦ **Ready to explore your options?** Get a personalized quote [here](#).



is **AICUP Member Preferred Program (AMP) Provider of the AICUP Health Choice Program**. They are an independent insurance agency offering a comprehensive suite of insurance and risk management solutions through [Check](#): Life, Health – Group Benefits, Auto, Property & Casualty, Workers Compensation, Cyber Supplemental/Employee-Paid Benefits, Individual Coverage Health Reimbursement Arrangement plans (ICHRAs).

Contact: David Baily, dbaily@bailyagency.com or 724-627-6121

Check out their AICUP webinar ICHRA, An Alternative Way of Funding Health Insurance [Recording](#) | [Slide Deck](#)

[Top](#)



What Does A Rize-Powered Course Look Like?

It's one thing to read a course description. It's another to look inside a course from a student's perspective.

Rize's [course overview videos](#) give you a guided look inside five undergraduate programs, narrated by the instructional designers who built them. You'll see the actual assignments and projects that students engage with every week.

The five updated videos are now available for:

- AI for Everyone
- Introduction to Cybersecurity
- Introduction to Digital Marketing
- Programming for Everyone

[Explore Course Overview Videos](#)



is the **AICUP Member Preferred Program (AMP) Provider of the Academic Program Sharing Program**. They help colleges

expand affordable, in-demand academic programs that attract and retain students in today's competitive environment. Their catalog includes programs in fields such as Artificial Intelligence, Cybersecurity, Digital Marketing, and Public Health. To date, more than 120 colleges across the U.S. have worked with Rize, serving over 13,500 students through its innovative online program-sharing model.

In addition to course sharing, Rize provides enrollment and academic services designed to help institutions generate new revenue and improve student outcomes. Partner colleges report positive results, including stronger retention, measurable enrollment growth, and higher student satisfaction.

Rize is extending discounted subscription pricing to AICUP members, with **savings of up to 25%**. Discounts scale as institutions add additional programs, providing flexibility and value.

Contact: Jimmy Pawelski, jpawelski@rize.education or 847-708-8724

[Top](#)



Barley Snyder

***Federal Reclassification of Medical Marijuana:
What Pennsylvania Colleges Should Do Now***

Effective April 28, 2026, the U.S. Department of Justice and the federal Drug Enforcement Administration [placed marijuana](#) subject to a qualifying state medical marijuana license into Schedule III, while making clear that broader marijuana legalization has not occurred and that marijuana outside those qualifying channels remains subject to stricter federal control.

Pennsylvania colleges should not treat the federal government's recent marijuana reclassification as a green light to allow medical marijuana on campus. But institutions also should not assume that older policy language stating that marijuana is illegal under federal law remains fully accurate in every respect.

This development matters for Pennsylvania colleges because it affects not only student-facing policies, but also employment practices, disability accommodation procedures, drug-testing protocols, and communications with campus leadership.

For many institutions, the most important point is this: the federal rule is a meaningful legal shift, but it is not a wholesale authorization for colleges to permit any and all marijuana use. Instead, federal higher education compliance obligations remain in place, and the legal issues now require more nuance than many existing policies reflect.

[Read More](#)

Barley Snyder

is a full-service law firm representing businesses and individuals throughout Pennsylvania and beyond. Its Higher Education Group advises colleges and universities on a wide range of issues, including governance, employment, student affairs, real estate, compliance, litigation, campus safety, and financing.

Contact: David J. Freedman, dfreedman@barley.com or 717-399-1578

[Top](#)



Sallie Mae Webinar

How to Recognize Student Loan Fraud

Thursday, June 4th

1:00 PM

[Register](#)

This presentation will explore the evolving tactics used by fraudsters to exploit the student loan system and the risks they pose for institutions and lenders alike. This session will highlight strategies for fraud prevention and steps to take if you suspect fraud. A school panel will participate in a discussion about the prevention and trends they have seen across campus.

Panel Includes:

- Andrea Ruth, Eastern University, Director of Financial Aid
- Jocelyn Martin, Elizabethtown College, Director of Financial Aid
- Keri Neidig, Director of Relationship Management, Sallie Mae

By the end of this session, participants will be able to:

1. **Identify common and emerging student loan and financial aid fraud schemes.** Recognize evolving tactics used by fraudsters to exploit the student loan process and higher education systems, including risks to institutions and lenders.
2. **Recognize red flags and suspicious behaviors across the enrollment and loan lifecycle.** Understand indicators of potential fraud in admissions, financial aid, and private loan certification processes.
3. **Assess institutional risk related to student loan fraud.** Evaluate how fraud can impact institutional operations, compliance, reputational risk, and student outcomes.
4. **Apply practical strategies to strengthen fraud prevention efforts on campus.** Explore prevention practices, internal controls, and cross-departmental approaches shared by college and university professionals.
5. **Outline appropriate next steps when fraud is suspected.** Understand recommended actions, escalation paths, and collaboration strategies with lenders and internal stakeholders when potential fraud is identified.
6. **Leverage peer insights to enhance institutional preparedness.** Gain actionable takeaways from real-world experiences shared by campus and lender panelists to inform institutional policies, training, and response plans.



is the nation's saving, planning, and paying for college company. We're proud to offer products and services that promote responsible personal finance and help students and families make college happen, including FDIC-insured savings products, a variety of free online tips, tools, and resources that help families plan for college, private student loans for undergraduate and graduate students, as well as the Sallie Mae Parent Loan and free online budgeting tools and information about how to manage student loan payments.

Contact: Keri Neidig, keri.neidig@salliemae.com or 610-216-2807

[Top](#)



SiteLogIQ

From Reactive to Proactive: Strategic Planning for Campus Facilities

Last month, webinar explored how colleges and universities can move from reactive facilities management to proactive, strategic planning. The session highlighted how data-driven capital planning can help reduce costs, minimize disruptions, and address deferred maintenance while improving collaboration across campus departments. Attendees learned strategies for building transparency, aligning stakeholders around shared goals, and communicating facilities priorities through clear, leadership-ready insights and digital tools.

Below you will find links to the recording and the slide deck.

[Recording](#)

[Slide Deck](#)



is a national provider of facility improvement and energy efficiency solutions, dedicated to making buildings healthier, safer, and more sustainable. With expertise in HVAC, solar energy, EV charging, water conservation, LED lighting, and system controls, SiteLogIQ delivers comprehensive design, engineering, and construction management services. With four offices across the Commonwealth, and 20+ offices nationwide, the company has completed over 11,000 projects totaling \$10 billion in construction value and \$1 billion in energy savings. SiteLogIQ partners with clients across sectors to modernize environments, reduce carbon footprints, and enhance operational performance.

Contact: Joe Martino, joe.martino@sitelogiq.com or 717-238-5737

[Top](#)



Workday

Built for What's Next: Workday AI & the Future of Higher Ed

[Register](#)

Wednesday, June 17th

1:00 - 1:55 PM


AI is reshaping what institutions expect from their ERP, and Workday has put together a session that cuts through the noise. Higher ed is changing faster than most administrative systems were designed to handle.

Enrollment pressure. Budget constraints. Staff doing more with less. And now AI, which is reshaping what institutions expect from their core platforms.

The question isn't whether AI will change how your finance, HR, IT, and student operations teams work. It already is. The question is whether your current system can keep up.

Here's what you'll walk away with:

- A clear picture of how AI is reshaping ERP expectations across higher ed — and what that means for your institution right now
- A live look at AI-powered capabilities in action across finance, HR, and student operations — not slides, not concepts, but working features
- A first look at Workday's new user experience (Sana) — and why your staff will actually want to use it
- Workday's approach to responsible, secure AI — because "trust us" isn't good enough

 **workday** continues to expand its presence in higher education, with over 580 institutions leveraging its platform and more than 90 now live on Workday Student. 13 AICUP schools are already part of the growing Workday community. To better support smaller colleges and universities, Workday has introduced new programs specifically designed to address common challenges such as financial constraints, limited resources, and accelerated implementation timelines.

Contact: Justin Brantley, justin.brantley@workday.com or 513.512.0048

[Top](#)

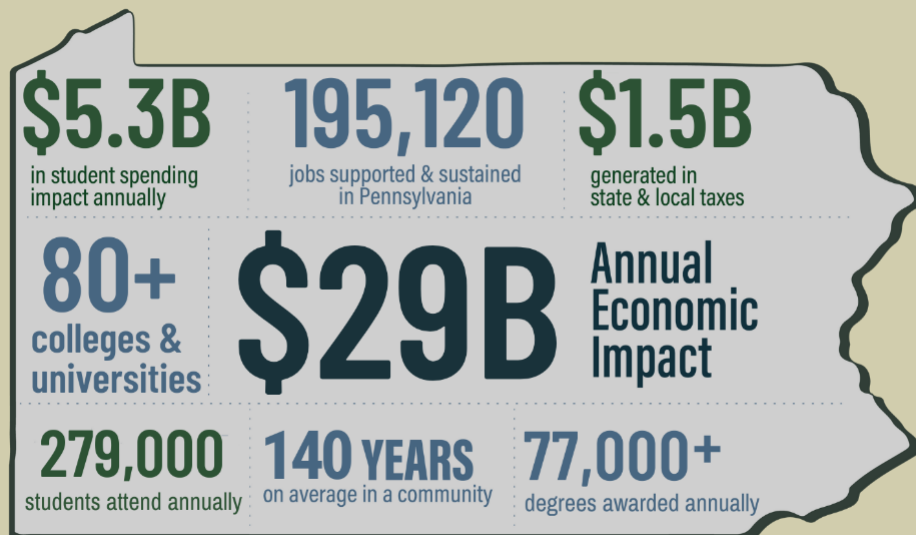


AICUP 2025 Economic Impact Report

~Tom Foley, AICUP President

With all the troublesome news for higher ed at the national level, the latest AICUP Economic Impact Report offers GREAT news for our member schools. The [report](#) on PA's 80+ independent nonprofit schools concludes these AICUP schools support almost 200,000 jobs in Pennsylvania every year, generate an annual economic impact of \$29 billion for the state's economy (that's larger than the entire budget of 28 states), and provides a stunning 158-to-1 return on PA taxpayer investment.

The report confirms independent nonprofit schools don't just prepare the workforce of tomorrow, they enhance Pennsylvania's economy today.



AICUP schools employ 1 in 33 workers in Pennsylvania, they supply 39,000 new PA workers every year, they're the top employer in 3 counties, and among the top 25 employers in 19 counties. In fact, the PA Chamber of Commerce and Industry named higher education "the fifth largest industry" in Pennsylvania, and AICUP schools constitute half the entire sector. AICUP graduates in this "industry" are an inclusive bunch:

- 45% of PA teacher cert candidates
- 47% of low-income students pursuing bachelor's degrees in PA
- 52% of working age adult students' re-skilling/up-skilling in PA
- 55% of all minority students pursuing bachelor's degrees in PA

- 58% of STEM graduates in PA • 69% of all PA nursing degrees

PA should celebrate this asset that has made our state the second-top net importer of students in the nation (for over 30 years) and the 2025 Wall Street Journal's third ranked state for quality outcomes in higher education. Don't take my word for it—look at the data.

[Read my op-ed](#)

[Top](#)



**AICUP
Business Efficiency
Programs**

www.aicup.org/Collaboration/BEP

Tom Foley

[President](#)

foley@aicup.org

Cale Nelson

VP of Finance & Member & Services

nelson@aicup.org

Kelly Carli

**Senior Manager of Member
Services**

carli@aicup.org



AICUP Leadership:

[Board of Directors](#)

[Committees & Working Groups](#)

[Staff](#)



Copyright © 2026, All rights reserved.
[unsubscribe from this list](#)
